

WALTER K.



---

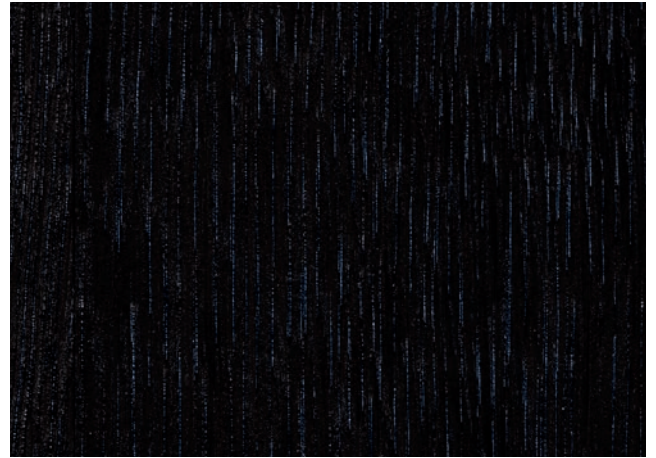
OBERFLÄCHEN LIVING  
*Surfaces residential*

## FURNIER – BRETTCHARAKTER / *Veneer – random matched*

---



.10VO EICHE WEISS PIGMENTIERT, GEÖLT – BRETTCHARAKTER /  
.10vo *Oak white pigmented, oiled – random matched*



.14VO EICHE GEFLAMMT, GEÖLT – BRETTCHARAKTER /  
.14vo *Oak burned, oiled – random matched*



.99VO NUSSBAUM MIT SPLINTANTEIL, GEÖLT – BRETTCHARAKTER /  
.99vo *Nutwood with sapwood inclusions, oiled – random matched*

## MASSIVHOLZ / *Solid wood*

---



.10WO EICHE WEISS PIGMENTIERT, GEÖLT /  
.10wo Oak white pigmented, oiled



.13WO EICHE GERÄUCHERT, GEÖLT /  
.13wo Oak fumed, oiled



.14WO EICHE GEFLAMMT, GEÖLT /  
.14wo Oak burned, oiled



.99WO NUSSBAUM MIT SPLINTANTEIL, GEÖLT /  
.99wo Nutwood with sapwood inclusions, oiled

## QUARZSTEIN / *Quartz Stone*

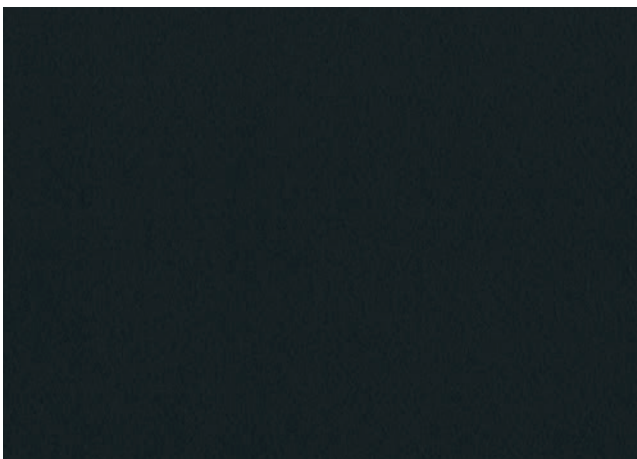
---



QUARZSTEIN WEISS /  
*Quartz Stone white*

## FENIX®

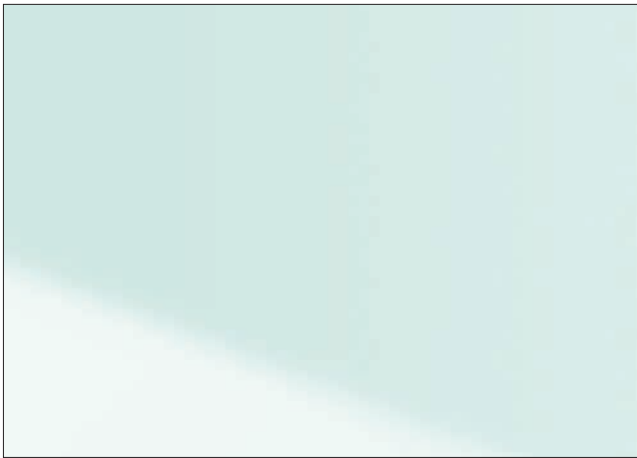
---



.109 FENIX® BLACK

## GLAS / Glass

---



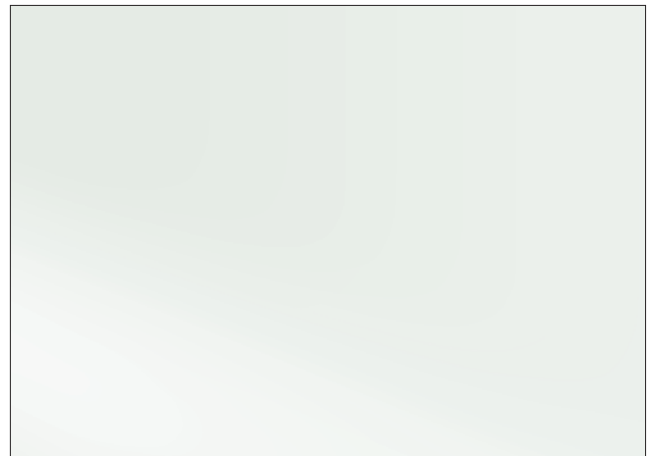
.30 GLAS SATINIERT /  
.30 Glass satinised



.31 GLAS TRANSPARENT /  
.31 Glass transparent



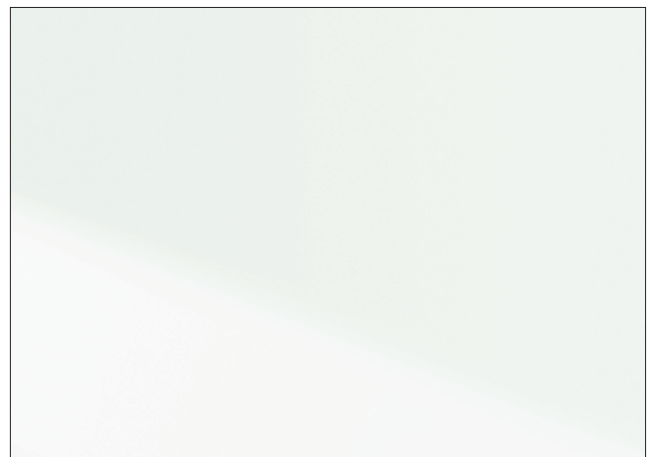
.33 GLAS SATINIERT SCHWARZ /  
.33 Glass satinised black



.34 GLAS SATINIERT WEISS /  
.34 Glass satinised white



.35 GLAS SCHWARZ /  
.35 Glass black



.36 GLAS WEISS /  
.36 Glass white

## GLAS / Glass

---



.37 GLAS SCHWARZ GETÖNT /  
.37 Glass black-hued



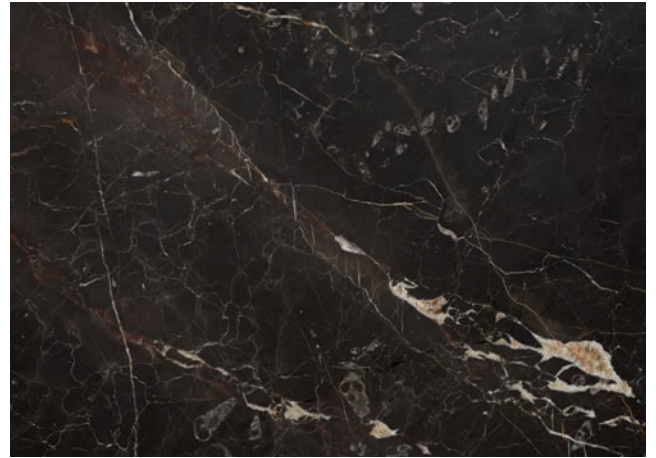
.38 GLAS BRAUN GETÖNT /  
.38 Glass brown-hued

## NATURSTEIN / *Natural Stone*

---



.115 NERO MARQUINA /  
.115 *Nero Marquina*



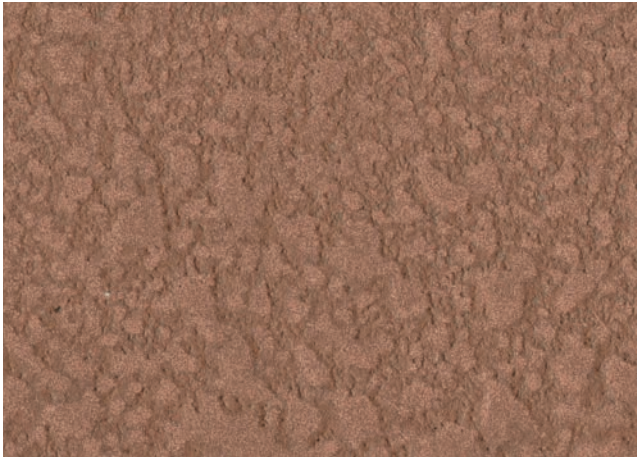
.116 NOIR SAINT LAURENT /  
.116 *Noir Saint Laurent*



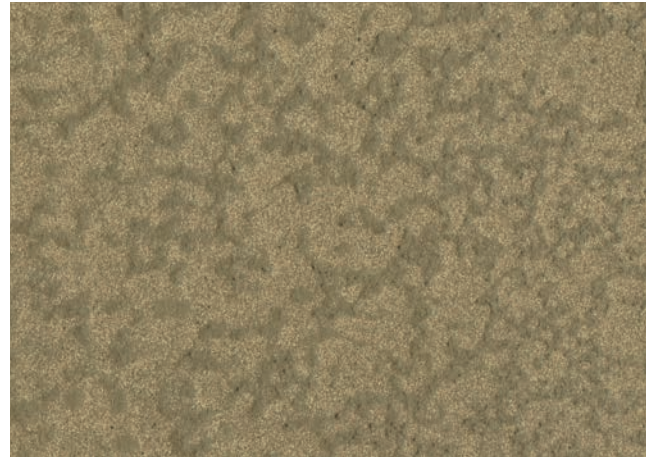
.128 BIANCO LASA /  
.128 *Bianco Lasa*

## LEICHTBETON / *Lightweight concrete*

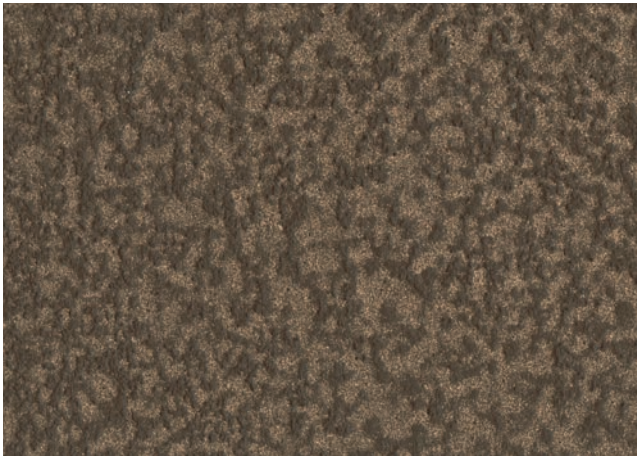
---



.123 OPTIK KUPFER /  
.123 *Copper look alike finish*



.124 OPTIK MESSING /  
.124 *Brass look alike finish*



.125 OPTIK BRONZE /  
.125 *Bronze look alike finish*



